



















LEXUS

AUTOMAX  
AUTOMAX.AE © +971 54 270 8000 L +971 4 2200800

RX350  
AWD





LEXUS

AUTOMAX  
AUTOMAX

RX350  
AWD

BRIDGESTONE













Merivision

SRS AIRBAG

SPORT

Check surroundings for safety

AUTO

AUTO

Climate

Off

Front

Rear

Sync

A/C



S









SRS AIRBAG







P 0 km/h



ALU TOMAX







32°C

9:03



32 km

x1000r/min

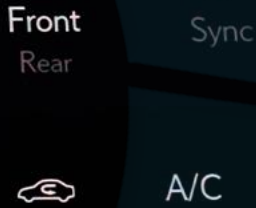
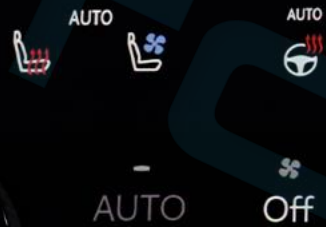
Distance to Empty

46 km





Check surroundings for safety



FRONT

VOL





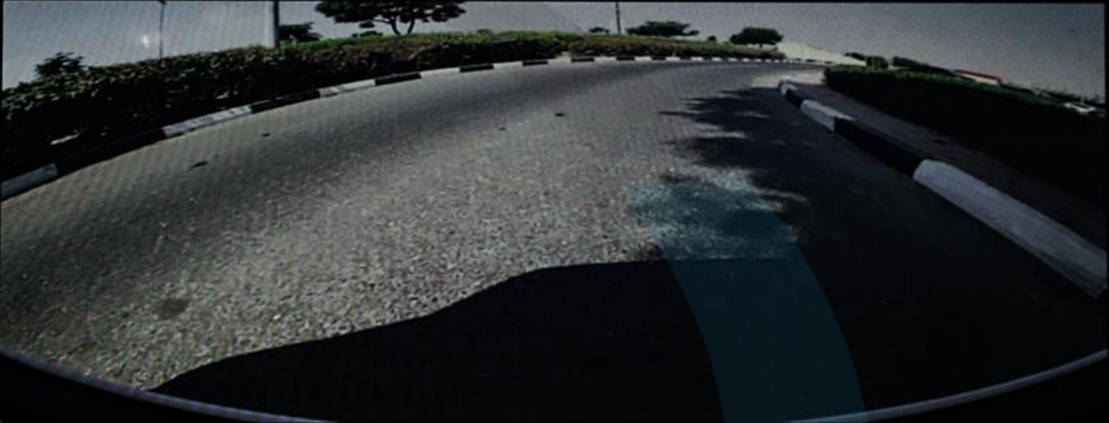
START  
STOP  
ENGINE

Navigation icons: car, P, gear



Seatbelt is  
unfastened

Unavailable



Check surroundings for safety

Climate controls: AUTO, OFF, temperature dials (17.0), A/C, Front/Rear, Sync, Fan speed, A/C icon

FRONT

VOL

Bluetooth icons





Vehicle • Driving assist 9:37

Lane departure alert system	Intuitive parking assist	Parking support brake	Blind spot monitor
Safe exit assist	Rear cross traffic alert	Rear camera detection	Proactive driving assist
Road sign assist	Pre-collision system		

Climate Front Rear Sync

AUTO AUTO Off + - A/C AUTO

17.0 17.0

FRONT VOL A/C





Camera View · Settings

- Panoramic View Monitor >
- Advanced Park >
- Cornering View
- View Under Vehicle
- LEXUS Park Assist 3D Display
- LEXUS Park Assist Distance
- Vehicle Body Color
- Moving object alert

Climate controls interface

Left side: AUTO AUTO AUTO

Center: 17.0 | AUTO | Off | - | + | A/C

Right side: Front Rear Sync AUTO AUTO

Bottom: FRONT VOL





Camera View - Settings

- Panoramic View Monitor >
- Advanced Park >
- View Under Vehicle
- LEXUS Park Assist 3D Display
- LEXUS Park Assist Distance
- Vehicle Body Color
- Moving object alert
- Warnings when auto display mode enabled

17.0

Climate

Front Rear Sync

AUTO AUTO

AUTO Off + A/C

FRONT VOL

17.0





× < Camera View · Settings

Panoramic View Monitor >	Speed Profile	Standard : ^
Advanced Park >	Detect. range	Standard :
	Prk. Method	Parallel :
	Prk. direction	Forward :
	Exit dir.: Per.	Right :
	Exit dir.: Par.	Left : v



A row of climate control buttons including "AUTO", "Off", "Front", "Rear", "Sync", and "A/C".



FRONT

VOL







Camera View - Settings

- Panoramic View Monitor >
- Advanced Park >

- Parking view Normal ⋮ ^
- Exit view Wide ⋮
- Parking Path Adjustment
- Road Width Adjustment
- Park Position Adjustment(fwd.)
- Park Position Adjustment(rev.)

Climate

Front Rear Sync

AUTO AUTO

17.0 17.0

AUTO Off + A/C

FRONT VOL







Vehicle

Seat controls >


Driving assist >

Trip information >

All wheel drive

Tire pressure

9:37



NORMAL

SPORT

ECO

CUSTOM

Search icon

Climate

Front Rear Sync

AUTO

AUTO

17.0

A/C

17.0

FRONT

VOL

Icons for seat heating, fan speed, and air distribution





Vehicle

- Seat controls >
- Driving assist >
- Trip information >
- All wheel drive
- Tire pressure

9:37

A 3D perspective diagram of a vehicle's chassis, showing the front and rear axles, wheels, and suspension components. The diagram is rendered in a dark, metallic style against a light background.

AUTO AUTO Climate Front Rear Sync AUTO AUTO

A row of icons for climate control: a person icon, a seat with heat waves, a fan icon, a steering wheel with heat waves, a grid icon, and another seat with heat waves.

17.0 AUTO OFF - + A/C 17.0

Two circular digital temperature gauges, each displaying "17.0" in white on a purple-to-red gradient background. Between them are buttons for "AUTO", "OFF", and a fan icon. To the right are buttons for "A/C" and a car icon.

FRONT VOL

A row of controls including a "FRONT" button with a speaker icon, a "VOL" button with a power icon, and a central volume knob.



START  
STOP  
ENGINE

Radio 9:35

**Favorites**

No signal	No signal	No signal	No signal
No signal	No signal	No signal	No signal

The Pulse ⏸

Navigation icons: Home, Back, Forward, Search, Sources

**Climate**

Left knob: 17.0

Right knob: 17.0

Buttons: AUTO, Off, A/C, Sync, Front, Rear

Bottom: FRONT, VOL, [Icons]



START  
STOP  
ENGINE

The infotainment screen displays a Bluetooth connection error. At the top right, there are icons for signal strength, Wi-Fi, and Bluetooth, along with the time 9:35. On the left side, there is a vertical menu with icons for navigation, music, phone, car, and settings. The main area of the screen shows a large Bluetooth symbol and the text "There are no devices currently connected". Below this text is a button labeled "Connect a device".

The climate control panel features two digital temperature displays, each showing 17.0. Between the displays are touch-sensitive buttons for "AUTO", "Off", and "A/C". Above the displays are icons for seat heating and cooling, and a "Sync" button. The word "Climate" is centered above the panel. Below the main controls, there are buttons for "FRONT" and "VOL" (volume).

The bottom dashboard contains several physical buttons: a parking brake button with a "P" icon, a "VIEW" button, a hazard lights button with a triangle icon, and a button with a car icon.





Settings 9:38

Current driver

- Guest

My settings

Personal info

Bluetooth & Devices

General

Notifications

Register your profile below to load all of your personal settings into this vehicle.

**Get started**

®

AUTO AUTO

Climate

Front Rear Sync

AUTO A/C

17.0 17.0

FRONT

VOL







Settings 9:38

- Display >
- Sound & Media >
- Vehicle customize >
- Driving assist >
- Voice & Search >

Register your profile below to load all of your personal settings into this vehicle.

**Get started**

Climate

Front Rear Sync

AUTO Off + A/C

17.0 17.0

FRONT VOL

FRONT VOL

Triangle hazard light button





Frequently used

Drive mode  
Sport

Lane departure alert  
system

Drive mode  
Eco

Intuitive parking  
assist

Comfort & Convenience

Max heat

Silent

Max cool



Climate control interface with temperature dials and control buttons.

Left dial: 17.0

Right dial: 17.0

Buttons: AUTO, Off, Close, Front, Rear, Sync, A/C

Icons: Fan, Sun, Snowflake, Car seat, Car seat with sun, Car seat with snowflake

FRONT

VOL







Head up display

HUD On/Off

HUD mode standard

HUD mode full

HUD mode minimal

Drive mode

Normal

Eco

Sport

Custom



Close

Front  
Rear

Sync



17.0

AUTO

Off



A/C

17.0

FRONT

VOL







Driving assist

  
Lane departure alert system

  
Parking support brake

  
Safe exit assist

  
Rear camera detection

  
Intuitive parking assist

  
Blind spot monitor

  
Rear cross traffic alert

  
Road sign assist





AUTO 

AUTO 

Close

Front  
Rear

Sync

AUTO  

  
17.0

AUTO

Off

-  +

A/C

  
17.0

FRONT

VOL







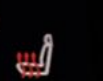
Driving assist  
Proactive driving assist



Close

Front  
Rear

- Sync



AUTO

Off

-

+

+



A/C



FRONT

VOL





START  
STOP  
ENGINE

Climate concierge

Adjust comfort devices automatically by AUTO



S-Flow

Direct air only to occupied seats.



Eco heat / cool



Deicer



AUTO



AUTO

Close

Front

Rear

Sync



AUTO



17.0

AUTO

Off



A/C



17.0

FRONT

VOL







## Experience Drive Connect

Subscribe for the latest route and location guidance with Cloud Navigation, Destination Assist and Intelligent Assistant.

Additional driving assist features available with subscription.

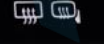
Get started

9:41



FRONT

VOL





P



VIEW











АУТОНМАТ









15.5











REAR SEAT  
LATCHES  
FOR CHILD SEAT  
INSTALLATION  
SEE OWNER'S MANUAL









PASSENGER  
AIR BAG OFF ON









MAX  
4kg





mark  
levinson







ODO  
TRIP



SET 

1

2

3

















ALBERT BIRNBAUM





АУТОМАТИКА





















لمشاهدة صورة السيارة بزاوية 360 درجة إضغط على الصورة أعلاه

Для просмотра автомобиля в формате 360°, пожалуйста, нажмите на фото выше.

To view the 360° degree please press on the picture above



# 2024 LEXUS RX 350 F SPORT 3 2.4T AWD 0Km

Бренд: Lexus

Brand: Lexus

الماركة: لكزس

Категория: RX 350

Category: RX 350

الفئة: آر أكس 350

Модель: F SPORT 3

Model: F SPORT 3

الموديل: F SPORT 3

Год: 2024

Year: 2024

السنة: 2024

Километров : 0Km

Kilometers: 0Km

كيلومترات: 0 كم

Двери: 4

Doors: 4 Doors

عدد الأبواب: 4 أبواب

Цвет: Черный

Color: Caviar Black

اللون: أسود

Цилиндр: 4

Cylinder: 4 Cylinders

عدد الأسطوانات: 4 أسطوانات

Лошадиные силы 275

Horsepower: 275 HP

عدد الأحصنة: 275 حصان

Трансмиссия: Автоматическая

Transmission: Automatic

نوع النقل: نقل أوتوماتيكي

Топливо: Бензин

Fuel: Gasoline

نوع الوقود: بنزين

Полный привод

ALL WHEELS DRIVE

دفع رباعي كلي مستمر



# 2024 LEXUS RX 350 F SPORT 3 2.4T AWD 0Km

21 Speaker Mark Levinson Premium Audio System

Digital Cluster

Lane Keeping Assist

Adaptive Cruise Control

Multiple Driving Modes

Head-up Display

Heated Steering Wheel

All Seats Heated and Ventilated

360 Degree Camera

Blind Spot Assist

Auto Park

Driver Attention Monitor

Adjustable Seats With Memory Package

Panoramic Sunroof

Rear View Mirror Camera

Keyless Entry

Automatic Trunk With Foot Trunk Sensor

Stop-Start Battery System

Hill Descent Control

Rear Air Conditioning Unit

Tire Pressure Monitoring System

Wireless Charger

Premium Triple-Beam LED Headlamps

Traffic Jam Assist

R 21"

Apple CarPlay + Android Auto



# 2024 LEXUS RX 350 F SPORT Э 2.4Т АШД 0Кт

- Mark Levinson Премиальная Мультимедийная Система
- Панорамная Крыша
- Цифровая Приборная панель
- Регулируемые Сиденья с Памятью Положений
- Контроль Полосы Движения
- Бесключевой Доступ
- Адаптивный Круиз-контроль
- Сенсор Открытия Багажника Ногой
- Регулировка Режимов Вождения
- Система «Старт-Стоп»
- Контроль усталости водителя
- Система Помощи При Спуске с Горы
- Проекция на лобовое стекло
- Кондиционер для пассажиров на заднем ряду
- Рулевое Колесо с Подогревом
- Датчик Давления в Шинах
- Вентиляция и Подогрев Сидений
- R 21"
- Камера 360 Градусов
- Беспроводная Зарядка
- Система Мониторинга Слепых Зон
- Apple CarPlay
- Автопарковка
- Android Auto



# 2024 LEXUS RX 350 F SPORT 3 2.4T AWD 0Km

\* المواصفات الإضافية:

Digital Cluster

خاصية التبريد والتدفئة لجميع المراتب

خاصية تدفئة المقود

مثبت السرعة التكييفي

شاشة بروجكتر أمامي

خاصية مراقبة انتباه السائق

تثبيت مسار

كاميرا المرآة الداخلية

دخول بصمة

فتحة سقف بانوراما

وضعية قيادة متعددة

نظام مراقبة النقطة العمياء

مراتب كهربائية متعددة الوضعيات مع خاصية الذاكرة

كاميرا بزاوية 360 درجة

نظام صوتي متقدم من Speaker Mark Levinson مع 21

سماعة

\* الأداء:

ناقل حركة أوتوماتيكي

عدد الأسطوانات: 4 أسطوانات

سعة المحرك: 2.4 توربو

عدد الأحصنة: 275 حصان

العزم 430 نيوتن.متر

دفع رباعي كلي مستمر



# 2024 LEXUS RX 350 F SPORT 3 2.4T AWD 0Km

دبة كهربائية مع حساس قدم  
نظام البطارية المزدوج للبدء و التوقف  
أوتو بارك  
نظام المساعد في نزول المنحدرات

وحدة تكيف خلفية منفصلة  
جنوط قياس 21 بوصة  
شاحن لاسلكي  
أبل كاربلاي و أندرويد أوتو



ALU TONAXX



# AUTOMAX®

The Boutique Of Muscle Cars, Truck Fanatics & German Automotive Experts.



تتکلم اللغة العربية

**WE SPEAK ENGLISH**

**ON PARLE LE FRANCAIS**

**Nosotros hablamos español**

мы говорим по-русски

**biz o'zbek tilida**

**gaplashamiz**

हम हिंदी बोलते हैं



**automaxgroup.me**



**automax group**



**automax.dxb**



**Automax\_LLC**



**+971 50 602 7200**



**automax.dxb**



**automax.dxb**



**automax.dxb**



**automax\_dxb**



**automax group L.L.C**

**New Auto Market - Dubai - United Arab Emirates**

 **Directions**